

King Abdullah Economic City Special Economic Zone



 **KAEC**
مدينة الملك عبدالله الاقتصادية

“Transforming our unique strategic location into a global hub connecting three continents, Asia, Europe and Africa. Our geographic position between key global waterways, makes the Kingdom of Saudi Arabia an epicenter of trade and the gateway to the world.”

His Royal Highness Prince Mohammed bin Salman bin Abdulaziz Crown Prince



Saudi Vision 2030

An Economy Designed For Investment




The Saudi Vision 2030 (V2030) roadmap draws on the nation's intrinsic strengths, utilizing its strategic location to build its role as an integral driver of international trade and the connection hub between three continents: Africa, Asia and Europe.


Driven by the ambitious goals of the V2030 economic transformation plan, KSA is one of the fastest-growing countries in the world. A wide range of economic reforms has successfully created new business opportunities nationwide.


These developments leverage the Kingdom's key strategic assets and assist in facilitating economic development and diversification with a specific focus on non-oil industries.

<https://www.vision2030.gov.sa/>

 **35.1m**
Population of Saudi Arabia

 **1.6%**
population growth rate in next 5 years

 **50%**
of population under 30

 **\$33.4 bn**
nominal GDP

 **3.2 bn**
Saudi labor force

 **\$23,570**
GDP per capita

The Kingdom of Saudi Arabia (KSA) is the largest economy in the MENA (Middle East and North Africa) region and the 18th largest economy in the world. In 2020, the GDP for KSA grew with an average annual rate of 8%, forecasting continued domestic growth. As a progressive G20 economy, Saudi Arabia offers a wide array of lucrative investment opportunities for those seeking to expand within KSA's flourishing commercial landscape.

KSA's geostrategic location provides unrivaled access to the MENA region and the rest of the world, given its centralized location on the Red Sea maritime and overland trade routes, connecting three continents.

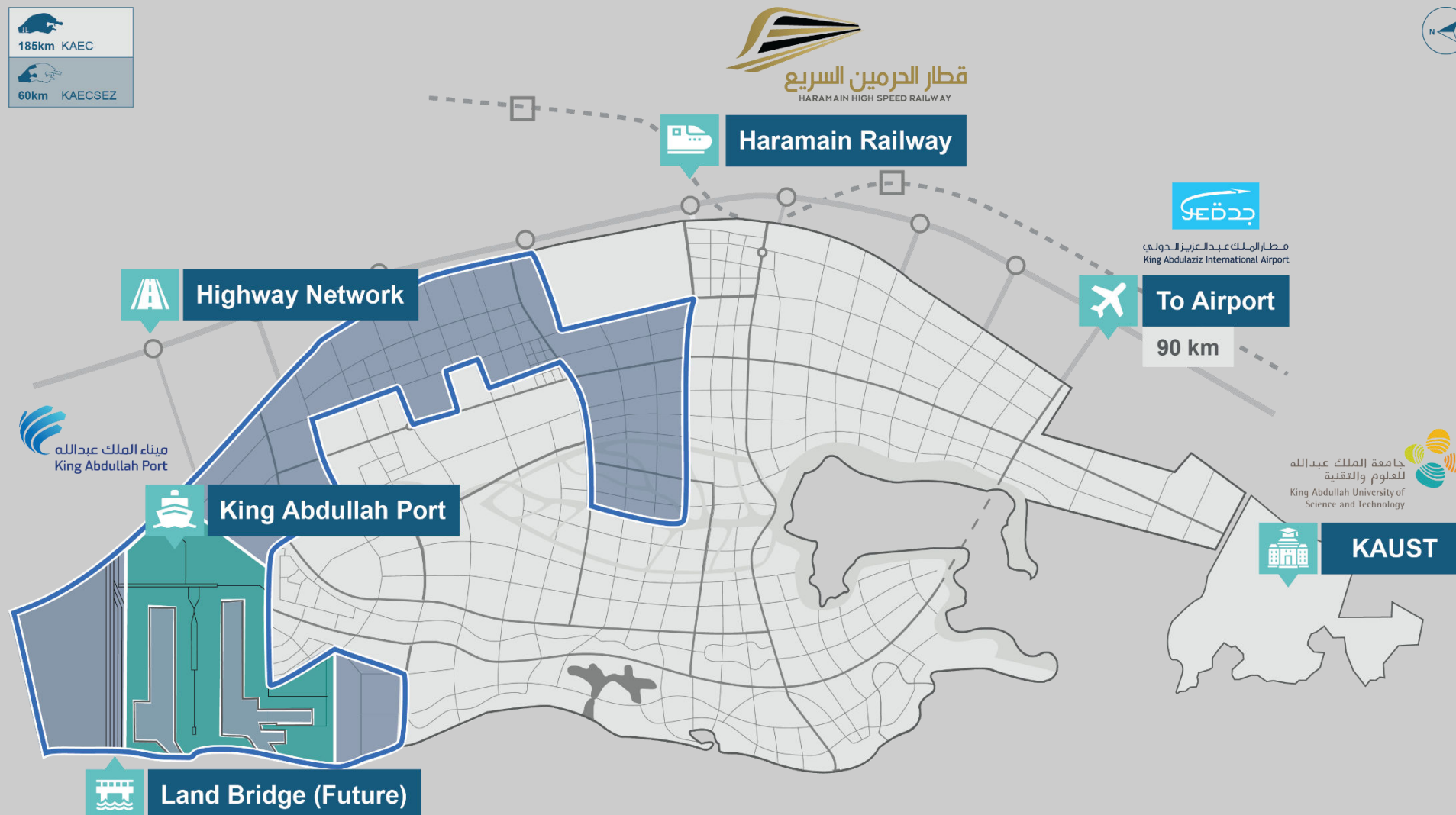
The Kingdom's ideal geographic position at the intersection of key global waterways makes it an epicenter of trade and a pristine gateway to the world.



King Abdullah Economic City Special Economic Zone

Logistics & Light Industrial Special Economic Zone

The Special Economic Zone (SEZ) at King Abdullah Economic City is a prime example of a V2030 business initiative, designed to accelerate socio-economic growth, advancing both the local and national economy in conjunction. SEZs are defined as dedicated zones where the rules of business are different from those that prevail in the surrounding mainland. These distinct rules principally deal with investment conditions, international trade and customs, taxation, and the regulatory environment; whereby the zone is granted a business environment intended to be more liberal from a policy perspective and more effective from an administrative perspective.



King Abdullah Economic City Special Economic Zone

At The Epicentre of Global Trade Routes



A strategically advantageous location for both logistics and light industrial operations. Situated on the focal point of global trade routes, KAEC Special Economic Zone allows ease of access to the MENA region and world markets.



KAEC Special Economic Zone creates a rewarding climate for investment by offering a wide range of globally competitive economic incentives, regulated solely by the Economic Cities & Special Zones Authority.



KAEC Special Economic Zone is built with state-of-the art infrastructure that covers sixty kilometers in land area and includes key facilities King Abdullah Port and KAEC's Industrial Valley



All commercial and social amenities are conveniently integrated within King Abdullah Economic City; a vibrant, modern community.



WHY KAEC SEZ?

King Abdullah Economic City's Special Economic Zone offer a unique opportunity for investment and enterprise that seamlessly connect the largest market in the Gulf to the rest of the world.

Retaining a variety of globally competitive economic incentives, the regulated area is governed by a single overseeing body within a prospering G20 economy and is actively supported by an ecosystem that enables growth.

To provide a great operational landscape, the Special Economic Zones within KAEC prioritize functional efficiency and profitability for your business.



**Trade anchor on
The red sea**



**Shipping On a
Global Scale**



**Multi-Modal
Connectivity**



**Ready
Infrastructure**



**Unique Commercial
Incentives**

1 Trade Anchor on the Red Sea

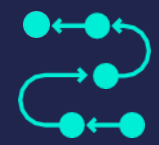
An Unparalleled Gateway To The Middle East, Africa & The world



An advantageous geostrategic location on the Red Sea that connects three continents, Asia, Europe and Africa as well as a key global waterway, makes KAEC Special Economic Zone a pivotal nucleus of global trade.



Uniquely positioned along the East-West belt & road maritime route, a strategically designed range of sectors allow KAEC Special Economic Zone to work as an active gateway to African markets.

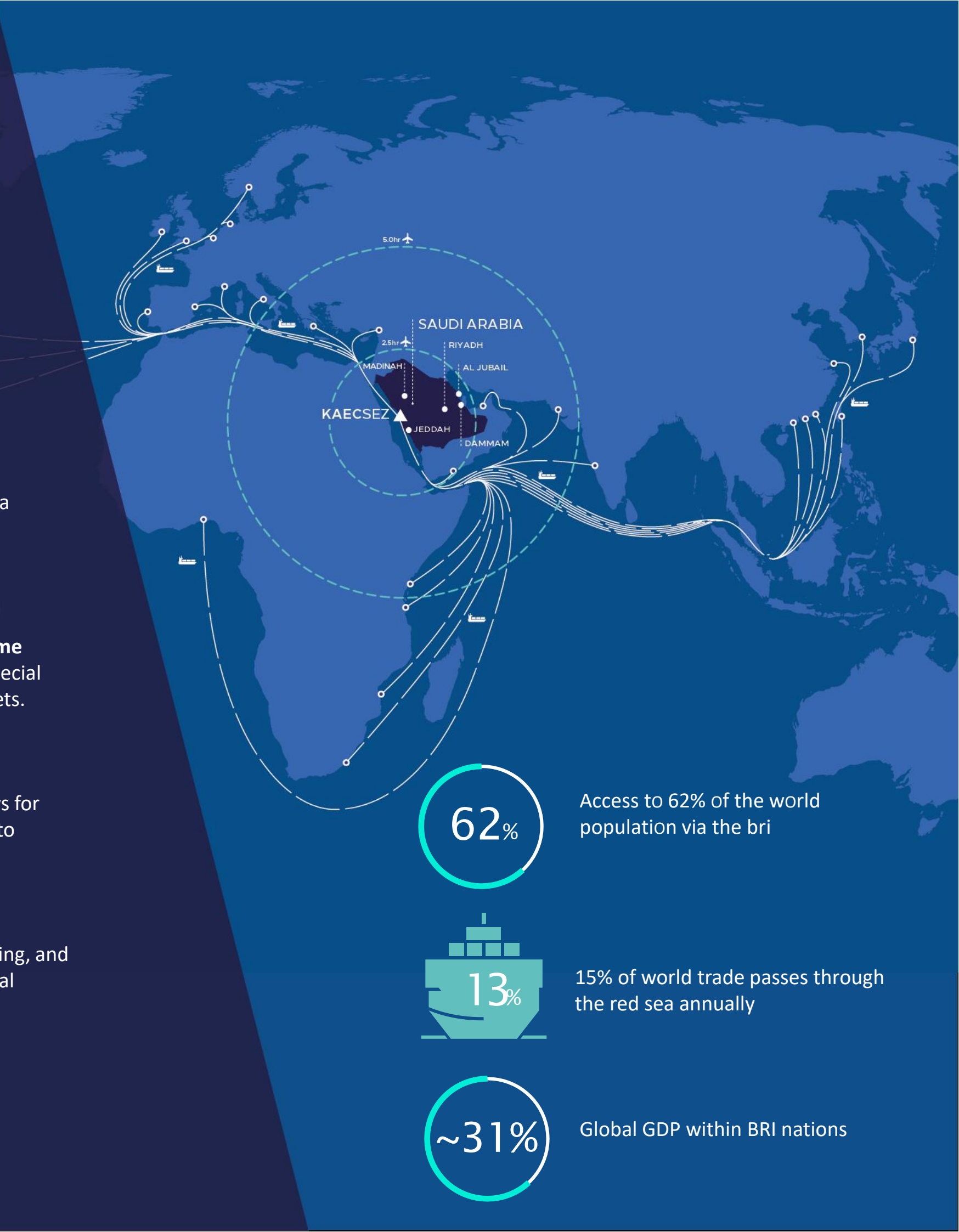


KAEC's ability to greenfield masterplan within the area allows for better planning of the Special Economic Zone and the ability to continuously scale up operations.



الوادي الصناعي
INDUSTRIAL VALLEY

Strong KAEC Industrial Valley activity across pharma, packaging, and FMCG underpin the Special Economic Zone's focus on logistical excellence



Access to 62% of the world population via the BRI



15% of world trade passes through the red sea annually



Global GDP within BRI nations

2 Shipping On a Global Scale

A World Class Port at The Centre of The Red Sea Corridor

Situated within the preferentially located city of KAEC, King Abdullah Port stands tall as one of the largest and most advanced commercial ports in the region. The port's world-class services and cutting-edge technology have earned its well-deserved recognition as the 1st Most Efficient Port Globally by the World Bank and S&P Global. With its unwavering commitment to sustainable business practices, the port continues to expand and prosper. The credit for this remarkable success goes to its proficient leadership and experienced staff who have always remained at the forefront of the industry's advancements.



Berth	Length	Depth	Capacity / Per Annum
Container	11,070 M	18 M	25,000,000 TEU
Ro/Ro	1,420 M	14 M	1,500,000 CEU
Bulk, Agri Bulk & General Cargo	1,420 M	14 M	30,000,000 Tons



Berth depths
18m



Bulk & General
Cargo



Container capacity
of 25m TEUs



Smart Gate
System



Maersk
Integrated
Logistics Hub



Roll On/Roll Off
(RORO) terminal



Port community
system

3 Multi-Modal Connectivity

Ready Access By Air, Sea Road & Rail

Road and rail networks

-  Existing Network
-  North South Railway
-  Haramain High Speed Railway
-  Saudi Land Bridge
-  Red Sea Maritime Routes
-  National Highway Network
-  Operational Port
-  International Airport

From its convenient locale along the coast of the Red Sea, KAEC Special Economic Zone is strategically positioned to make transportation easier than ever.

Within a city location that highlights versatile transport infrastructure at the forefront of its masterplan, KAEC SEZ provides ready access to the Kingdom and the Gulf via road, rail, air and sea – acting as a dynamic facilitator of regional and international trade.

The Red Sea's shipping routes are linked to a global network that allows access to KAEC SEZ's well-developed port, air, and rail infrastructure. These facilities enable local and regional connectivity and create a vibrant logistics and light industrial pitstop on the Red Sea.



90 km from Jeddah International Airport

 approximately 1-hour drive



Direct access to the National Highway Network



Linked to a global network of ports



High-speed rail travel times



Saudi land bridge east-west freight line



4 Ready Infrastructure

A System of Utilities
To Facilitate Your Success

KAEC Special Economic Zone is nestled within an economic city, allowing operators to leverage upon existing investments and capitalize on the existing infrastructure available in the city.

KAEC Special Economic Zone provides necessary access to state-of-the-art sewage system, supply to medium voltage electricity and portable water for all tenants, all aimed at assisting in the flow of day-to-day operations.

Natural dry gas can be provided directly from the established Gas Zone and a wide range of telecoms services are available via our cutting-edge fiber network.



Gas



Sewage



Power



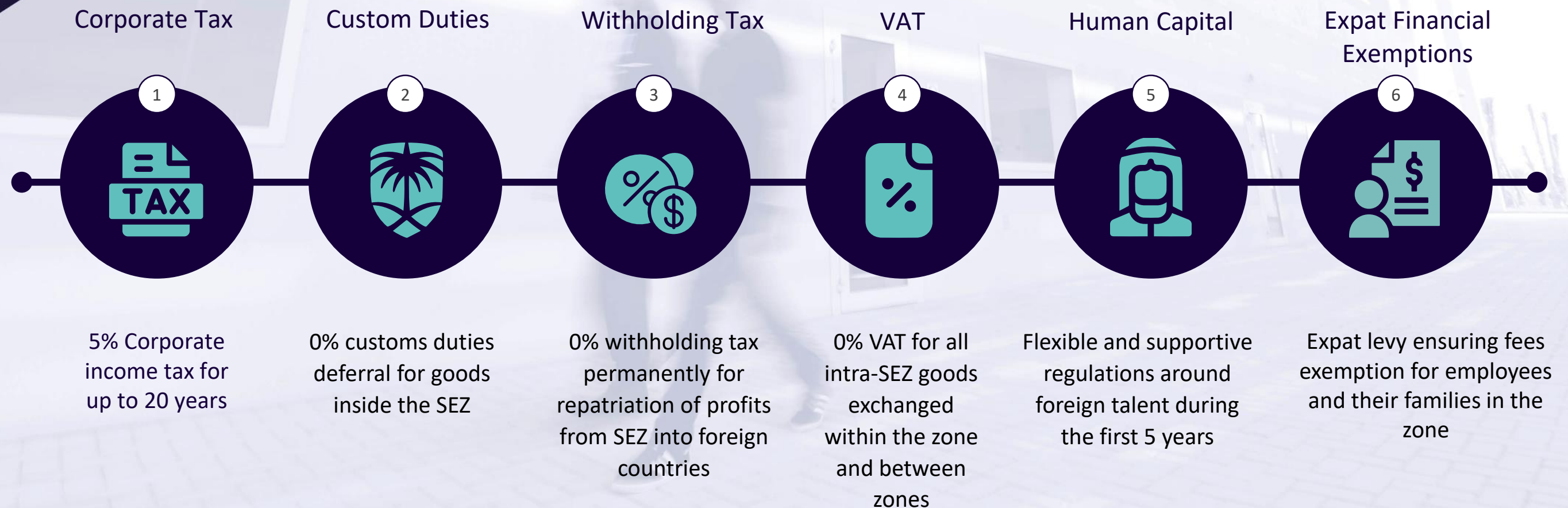
Water



Telecoms

5 Unique Commercial Incentives

Foundations For Success



Explore The Costal Communities in King Abdullah Economic City



Why Choose KAEC?





King Abdullah Economic City Special Economic Zone

Gateway. Connectivity. Accessibility.



<https://www.kaec.net/kaecsez/>

Outside KSA : +966122605030

KSA: 800 11 800 10

kaecsez@kaec.net



kaec_Saudi



emaar-the-economic-city